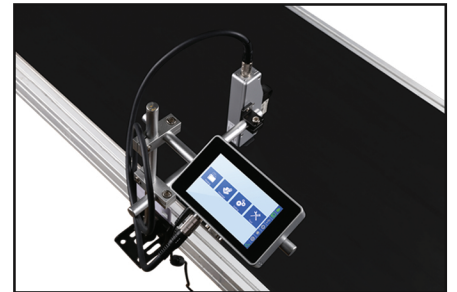
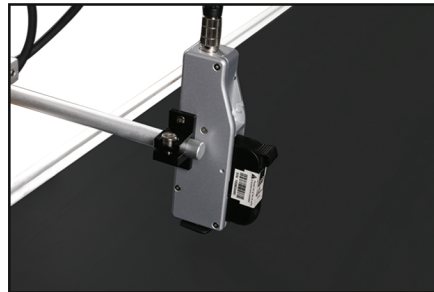
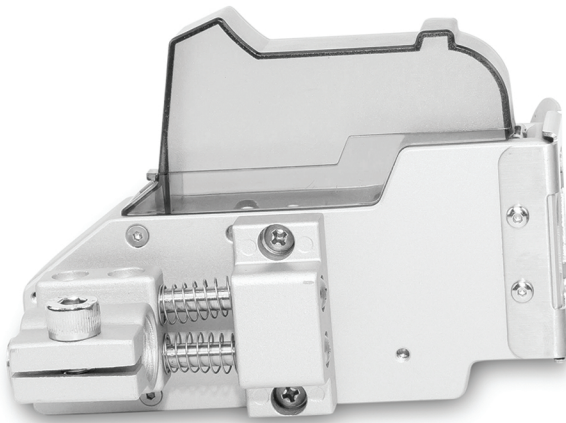


Elfin 1S

HIGH RESOLUTION INKJET PRINTER



Separate Print head from Controller

Separated print head and controller, suitable for flexible installation & mounting options



Touchscreen Editing

5-inch touchscreen display for easy editing



Economical Value

Low cost of ownership with low maintenance costs



Language Input

Supports multiple languages and various fonts

SYSTEM SPECIFICATIONS

Print Technology	HP Thermal Inkjet 2.5 Technology
Maximum Print Height	0.5" (12.7 mm) or single character font height
Minimum Print Height	3/64" (1 mm) or single character font height
Number of Print Lines	1, 2, 3, 4 or more lines of high resolution codes
Vertical Print Resolution	300 dpi superb image and text quality
Horizontal Print Resolution	300 dpi
Maximum Print Speed	198 ft/min (60 m/min) @ 300 dpi (default)
Printhead Cable	1.2m (4 ft) length; other lengths available
Time & Date	Real-time internal clock
Product Sensor	Built-in optical photoeye
Communication Interface	Ethernet, USB 2.0, and RS232 port
Touchscreen	5" (12.7 cm) full color touchscreen display
Ink Management	Built-in measuring system for ink consumption
Low Ink Indicator	Alert on touchscreen display; alarm light beacon is optional
Installation	Mounting brackets for side printing or down printing; spring mechanism is optional
Electrical Requirements	100-240 VAC, 50/60 Hz, 45W (specified AC adapter)
Agency Certifications	CE, FCC

SOFTWARE SPECIFICATIONS

Time & Date	Custom time and date formatting including expiration date and Julian date
Logos	Supports bitmap (BMP) image format
Item Numbering	Incremental counters for item sequencing or production count
Shift Codes	Customizable shift code times and naming with automatic rollover
Barcodes	All standard barcode types including 2D barcodes
Printing Features	Reverse, invert, rotate, repeat
Message Length	Up to 9.8 ft (3 m)
Number of Messages	Store up to 500 messages
Ink Usage	Automatically calculated for each message and displayed on touchscreen
Database Capability	Ethernet communication protocol for external communication
Languages	English, Spanish, Portuguese, German, French, Chinese, Japanese, and Russian

INK SOLUTIONS

Inks	Water based and solvent based options
Colors	Black, Red, Blue, Yellow, White; others colors upon request
Volume	42ml ink cartridges or 370ml bulk ink solutions
Printable Materials	Porous and non-porous surfaces

Tourmaline Enterprises, Inc.

25827 Jefferson Avenue, Murrieta, CA 92562

Tel: 951-674-0051 | Fax: 951-674-0055

info@tourmalineenterprises.com | www.tourmalineenterprises.com