

SHRINK WRAP SEALER

(Economical Portable I- BAR Sealer)

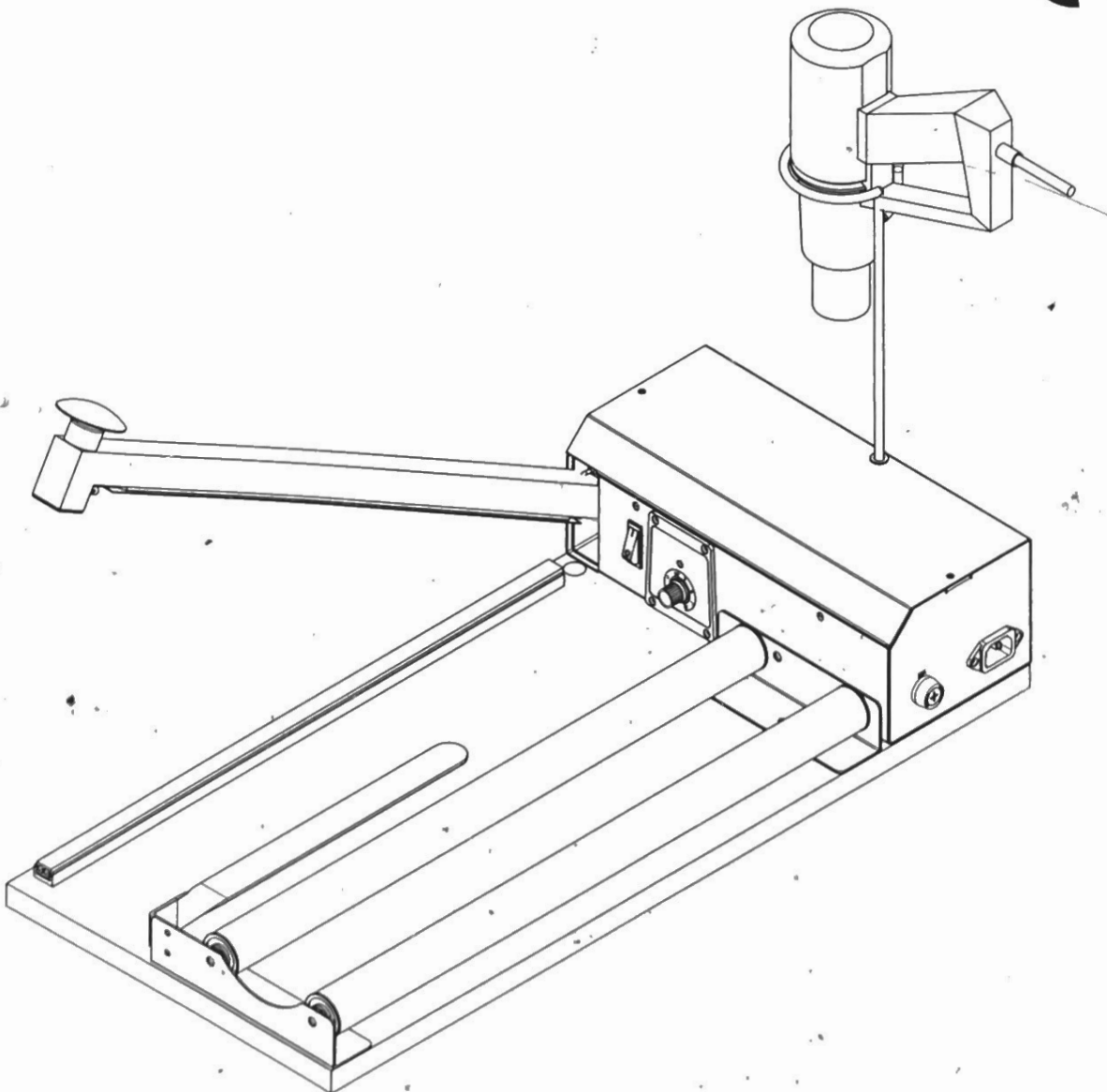
300SP, 450SP, 600SP

300IP, 450IP, 600IP, 800IP, 1000IP

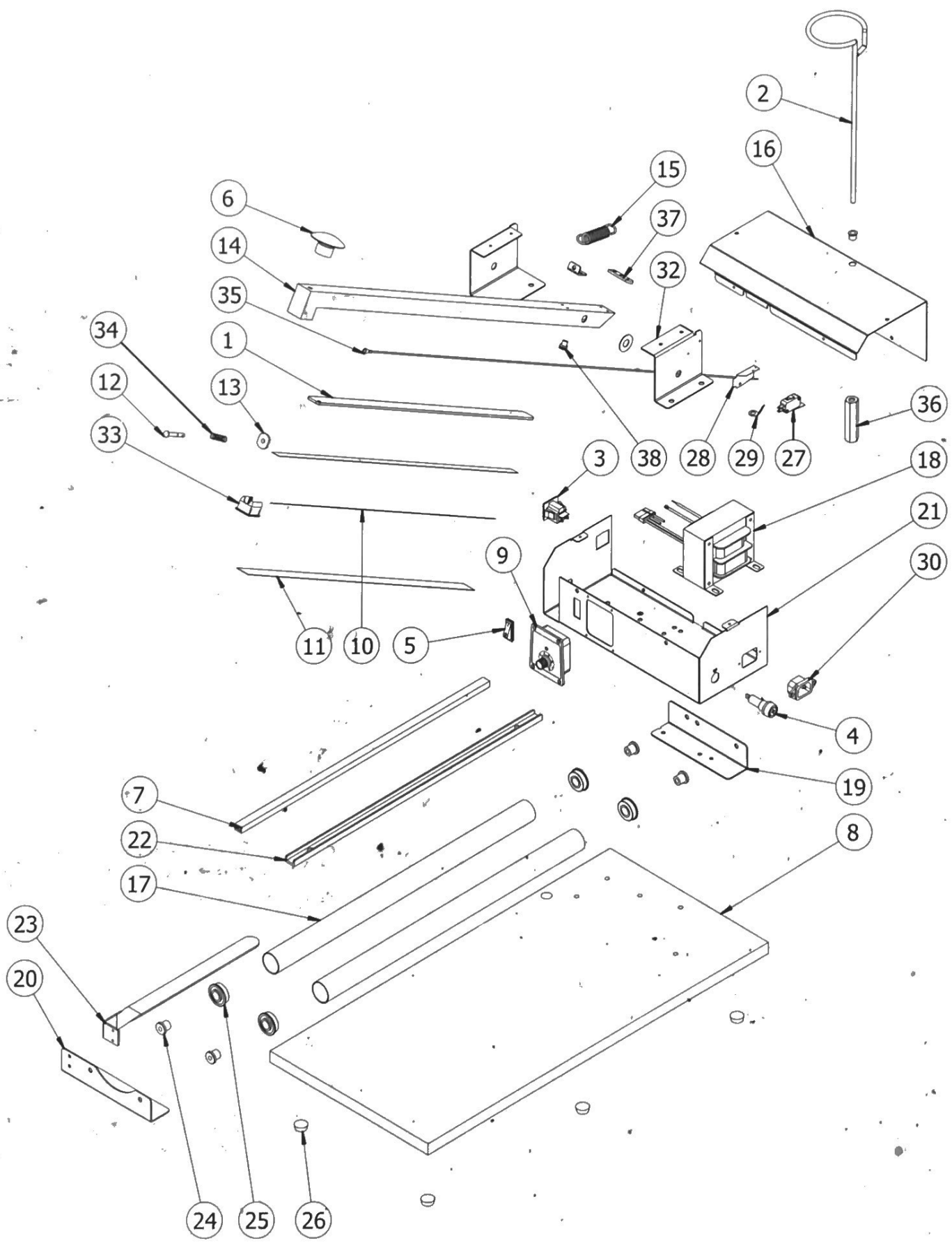
(2013I, 2018I, 2024I, 2032I, 2040I)

INSTRUCTION MANUAL

CE



1. CONSTRUCTION DIAGRAM

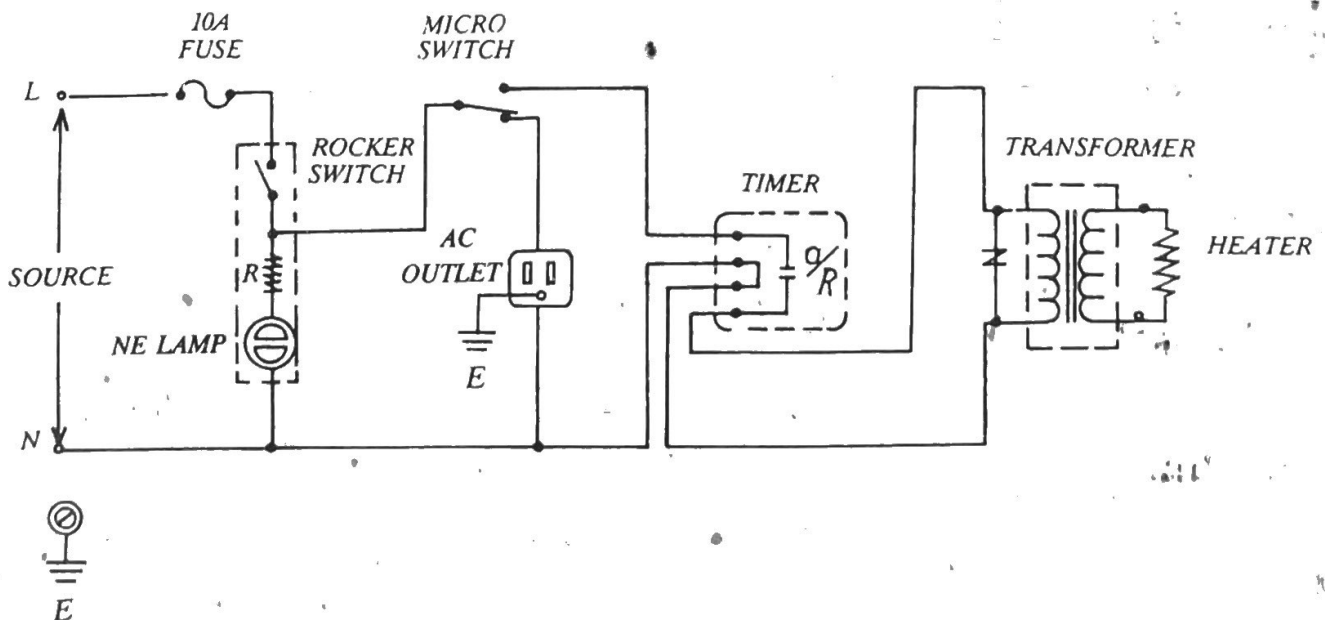


2. PARTS LIST

- | | |
|----------------------------------|-----------------------------|
| 1) Fiber Insulation Plate | 20) Roller Bracket 2 |
| 2) Heat Gun Bracket | 21) Box Body Base |
| 3) Heat Gun Power Socket | 22) Lower Silicon Support |
| 4) Fuse Holder | 23) Film Separate plate |
| 5) Power Main Switch | 24) Roller Hinge |
| 6) Handle Knob | 25) Roller Bearing |
| 7) Sealing Silicon Pad | 26) Rubber Foot |
| 8) Enclosure Bottom | 27) Limited Switch |
| 9) Timer Control Set | 28) Switch Insulation |
| 10) Heating Element | 29) Terminal Pin |
| 11) Upper PTFE Strip | 30) Power Socket |
| 12) Heating Post | 31) Power Plug |
| 13) Heating Post Assembly Washer | 32) Arm Bracket |
| 14) Sealing Arm | 33) End Cover |
| 15) Return Spring | 34) Spring For Heating |
| 16) Control Box Cover | 35) Lead Wire & Terminal |
| 17) Film Roller | 36) Bolt For Gun Bracket |
| 18) Transformer | 37) Action Setting Plate |
| 19) Roller Bracket 1 | 38) Terminal Bolt & Bushing |

3. ELECTRIC CONNECTION DIAGRAM

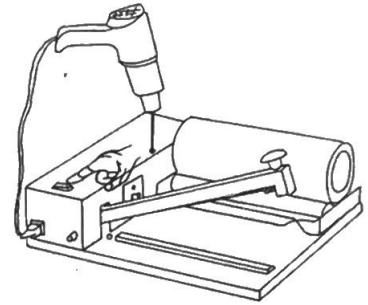
CONNECTION DIAGRAM



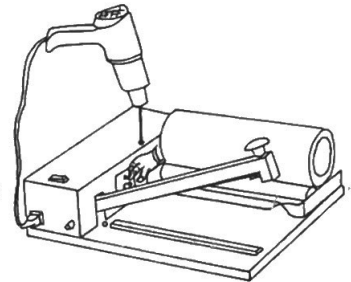
4. OPERATING INSTRUCTION

Place film on right of the sealer, Separate film and place around separate plate.

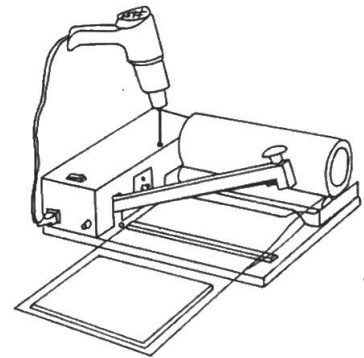
1. Plug power cord into grounded outlet. Turn on main switch to ON position, yellow light appears. No warm-up time is required.



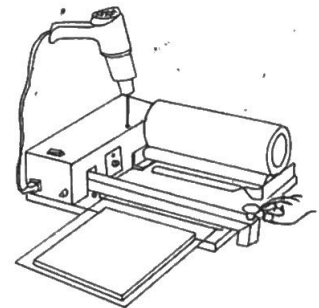
2. Set timer knob according to shrink film thickness.



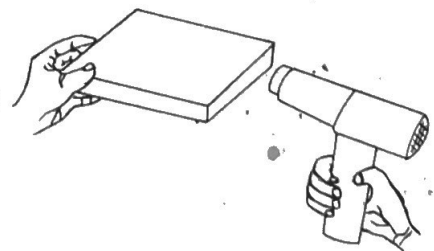
3. When the product is placed inside the film. There should be a clearance between 10mm to 20mm from the product and the sealing wire.



4. Press handle arm down about one second after sealing light goes off automatically, then release the arm and pull the film apart at the seal. Tear the resulting bag from the rest and seal the opening.



5. Use the Heat Gun to evenly shrink the film. Hold hot air gun 150mm (6 inches) away from box spreading heat evenly over entire box. Avoid touching or concentrating heat on one place with gun.



5. HELPFUL INFORMATION

- 1) Always keep the sealing platform clean. Particular care should be taken to remove any residue from the PTFE tape.
- 2) Do not clean the sealing platform with anything wet.
- 3) When replacing the heating element always check the condition of the bottom PTFE tape. It is important that you replace the element wire only with the one made for this machine. You can damage the transformer with the wrong element wire.
- 4) Occasionally check the condition of the top pressure pad (silicon rubber) for wear or burn. A poor rubber pad will effect on the quality of your seal.

USE ONLY GENUINE REPLACEMENT PARTS

6. CAUTIONARY MARKING

CAUTION:

- 1) To reduce the risk of shock, disconnect the unit from the supply circuit before servicing the replacement of the heating element.
- 2) To provide continued protection against risk of electric shock, connect to properly grounded outlet only.
- 3) If the supply cord is damage, it must be replaced by a special cord or assembly available from the manufacture or its service agent.

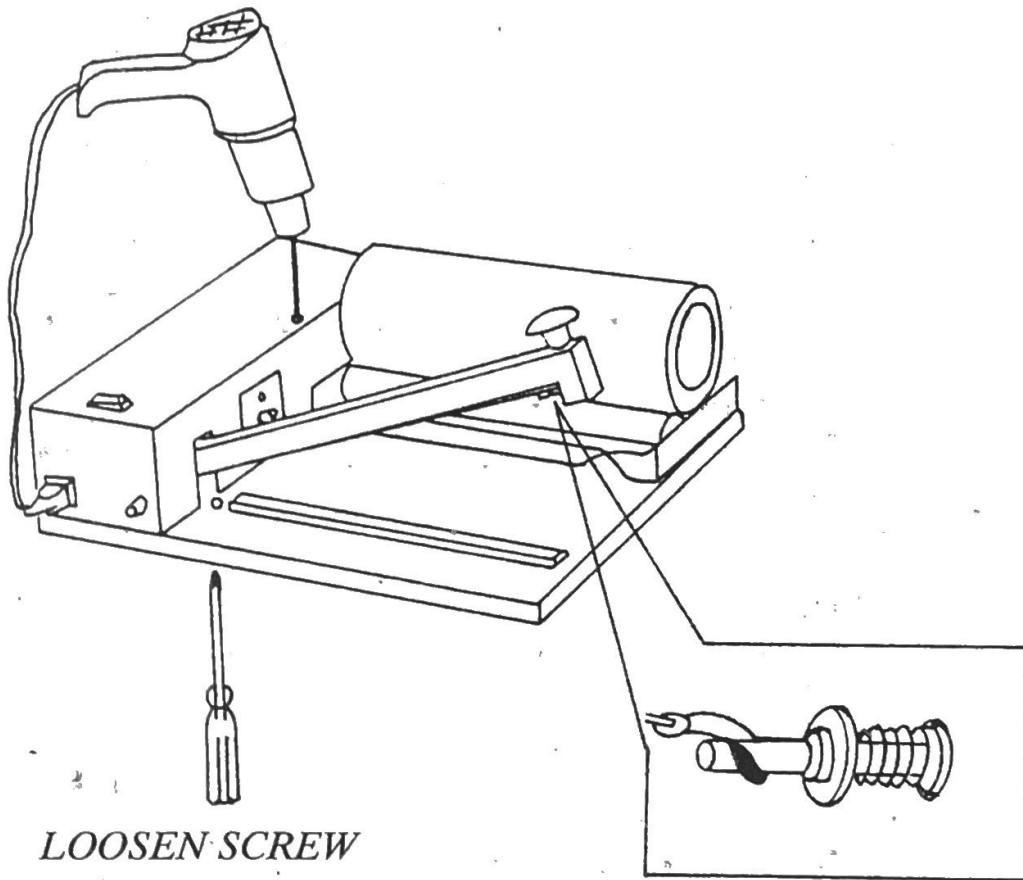
WARNING:

- 1) A live heating element is located in the jaw under the upper sealing plate. Use caution during operation. **DO NOT TOUCH THE ELEMENT.**
- 2) For continued protection against fire or electric shock, replace only with type cartridge and 10 ampere fuse, provided in legible adjacent to fuse holder.
- 3) Close supervision is required when the product is used near children.

7. CHANGING PARTS

UNPLUG FROM ELECTRIC OUTLET

USE ONLY GENUINE REPLACEMENT PARTS

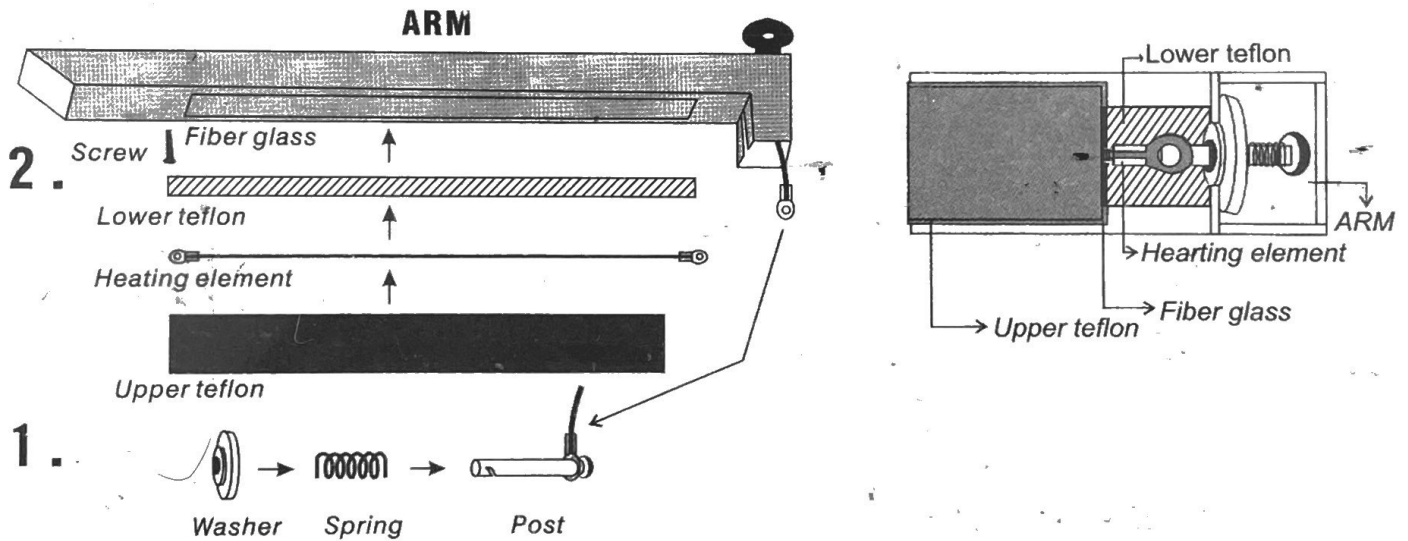


LOOSEN SCREW

HEATER TERMINAL ASSEMBLY

- 1). Replace Heating Wire.
 - a. Lift up PTFE cloth remove form heater jaw of sealing arm.
 - b. Put out the end cover form sealing arm.
 - c. Loosen fixed the screws M4 and put out broken heating element form the fixed terminal of heating post.
 - d. Replace new element wire put on heater jaw by the screw M4 of sealing arm.
 - e. Put new element wire another terminal on heating post of sealing arm, then tighten heating wire push back the fixed terminal assembly to sealing arm.
(DO NOT BEND. OR CRIMP THE ELEMENT WIRE)
 - f. Replace the end cover and adhesive PTFE strip on the heating element of platen arm.

- 2). Instructions for installing heating element, PTFE cloth insulators.
 - a. Peel off adhesive backer of lower PTFE strip and attach to the sealing arm. Place screw through loop on end of the heating element and attach to bottom of arm.
 - b. Connect the post to the power cord. Insert spring through post. Place washer through post and push it against spring so that both fit inside the head of the sealing arm (see diagram). Connect the heating element to the opening on the post. Remove the adhesive backer of upper of PTFE strip and place over the element.



8. SPARE PARTS

ACCESSORIES	Q'TY
Heating wire	1
Fuse	10Ax1
Upper PTFE cloth	2
Lower PTFE sheet	1

9. SPECIFICATIONS

Film dispenser rack included.

Film & heat Gun sold separately.

Model	300IP/ 300SP	450IP/ 450SP	600IP/ 600SP	800IP	1000IP
Max. Seal Length	330 mm (13")	450 mm (18")	600 mm (24")	800 mm (32")	1000 mm (40")
Heating Timer	1-3 sec	1-3 sec	1-3 sec	1-3 sec	1-3 sec
Watts	250W	350W	450W	700W	800W
Heat Gun Watts	600/1200W	600/1200W	600/1200W	600/1200W	600/1200W
Weight	9Kg	10Kg	11Kg	12Kg	14Kg
Size (D*W*H)	31x 52x 15cm	31x 63x 15cm	31x78x20cm	31x 98x 25 cm	31x118x 30 cm